

Motorized Recreation and DNR

Prepared by OREP Staff
Amy Madigan and Michael Rhodes

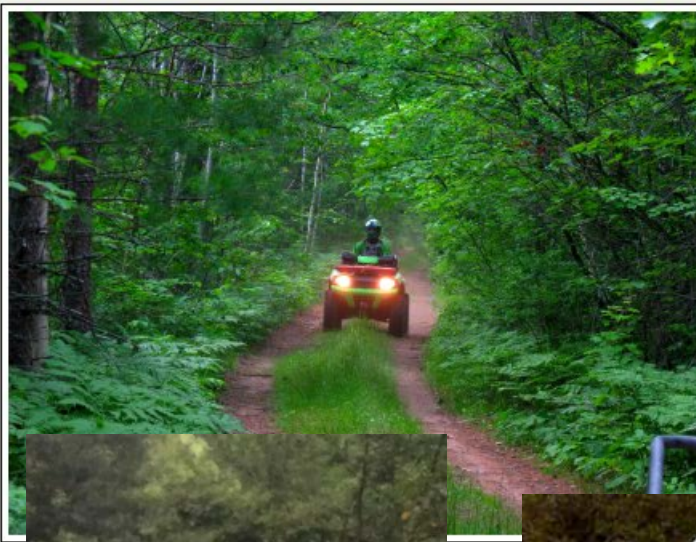
Why offer motorized recreation?

- During the development of the Sustainability Bill SB 1566, the Director and legislative staff worked with legislators and constituent groups to generate revenue for the agency.
- A \$15 use sticker was to be implemented on OHV/ATV/UTVs and the proceeds would then go to researching the creation and development of DNR-managed OHV recreation site.
- Motorized recreation is increasing in popularity.

Perceptions



Possibilities



OHV Recreation in the Midwest

- WI - 42 sites, **23** managed by state/federal/municipal
- MI – 40 sites, **19** managed by state/federal/municipal
- IA – 17 sites, **8** managed by state/federal/municipal
- MO – 28 sites, **5** managed by state/federal/municipal
- IN – 24 sites, **4** managed by state/federal/municipal
- IL – 30 sites, **1** managed by state/federal/municipal
- *47 states in the US feature motorized recreational facilities managed by a state, federal or municipal agency.*

Outdoor Industry Association 2012 Study

Motorized trips in the US

Motorcycle riding	244,602,296
Off--road riding	344,151,172
Boating	300,035,287
Snowmobiling	9,371,606
RV'ing	29,599,946
Total	927,760,308

Motorized recreation continues to rise in popularity across the nation.

Expenditures for equipment and accessories for motorized recreation, U.S.

	Motorcycling	Off-- -Road Riding	Boating	Snowmobiling	RV'ing
New vehicles	\$4,410,925,249	\$6,644,222,105	\$6,032,069,885	\$310,279,465	\$7,103,056,630
Used vehicles	\$2,409,890,416	\$4,374,538,413	\$7,824,287,712	\$418,751,814	\$5,340,846,760
Parts	\$2,194,286,927	\$3,054,086,361	\$2,012,365,803	\$280,711,458	\$521,997,549
Maintenance	\$1,676,477,791	\$7,564,492,052	\$2,171,317,410	\$139,412,615	\$387,616,426
Insurance	\$1,440,017,506	\$2,130,699,386	\$1,574,718,811	\$83,488,314	\$417,148,468
Registration	\$865,555,418	\$6,476,434,884	\$588,411,579	\$75,266,758	\$289,364,923
Apparel	\$829,734,995	\$1,384,642,421	\$386,094,227	\$115,937,055	\$70,360,964
Storage	\$484,992,947	\$1,619,985,415	\$638,695,070	\$177,855,166	\$149,416,205
TOTAL:	\$14,311,881,249	\$33,249,101,037	\$21,227,960,497	\$1,601,702,645	\$14,279,807,925

Spending Categories

Appendix A – Survey Expenditure Data

Wisconsin

Lodging

Food/drink

Entertainment

Shopping

Gas/Transportation

Convenience Stores

Gaming

In WI, ATVers
spent \$16.1 million
at convenience
stores.

Categories	Per Machine Survey			Statewide Totals (\$1,000s)		
	Total	Out-of-State	In-State	Total	Out-of-State	In-State
Current Average Related Assets Values						
OHV	\$5,583			\$229,675		
Storage fees	\$5			\$215		
Special shed	\$172			\$7,095		
Riding gear \$ supplies	\$214			\$8,821		
Trailer & transport supplies	\$488			\$20,053		
Total Related Assets	\$6,463			\$265,860		
Operation & Maintenance Expenditures						
Purchase of OHVs	\$772	\$15	\$757	\$31,763	\$620	\$31,143
Trailers	\$220	\$3	\$217	\$9,062	\$133	\$8,929
Licenses, registration fees	\$35	\$1	\$35	\$1,458	\$30	\$1,428
Insurance	\$133	\$3	\$130	\$5,487	\$131	\$5,356
Mechanic and dealer charges and parts	\$276	\$8	\$268	\$11,370	\$340	\$11,030
Fuel, oil, lubricants, and other fluids (OHV only)	\$136	\$3	\$133	\$5,608	\$136	\$5,472
Covers for trailer or OHV	\$9	\$0	\$9	\$369	\$3	\$366
Membership in OHV organization	\$23	\$0	\$23	\$960	\$0	\$960
Total Operation & Maintenance	\$1,606	\$34	\$1,572	\$66,078	\$1,394	\$64,684
Related Personal Expenses						
OHV clothing, helmets, boots, gloves, etc.	\$87	\$12	\$75	\$3,563	\$482	\$3,081
Fuel and fluids for personal transportation to OHV activities	\$156	\$23	\$133	\$6,408	\$938	\$5,470
Food and beverages purchased as part of OHV activities	\$82	\$13	\$70	\$3,385	\$525	\$2,859
Lodging expenses incurred as part of OHV activities	\$71	\$45	\$58	\$4,241	\$1,843	\$2,398
Entertainment on OHV outing	\$47	\$28	\$40	\$2,767	\$1,140	\$1,627
Total Related Personal Expenses	\$442	\$120	\$375	\$20,364	\$4,928	\$15,436
Total Expenditures	\$2,049	\$154	\$1,948	\$86,442	\$6,322	\$80,120

Economics of Motorized Recreation

\$126 million in transactions or sales, **\$33.7 million** in personal income, and **1,200 jobs**.

The Economic Impact of Off-Highway Vehicles in Iowa, 2008

Economics of Motorized Recreation

\$523.33 per individual, per trip
bringing the annual total spending
by all ATV users to

\$295,285,693

Economic & Demographic Profile of Wisconsin's ATV Users: WI Department of Tourism 2003





Ride Off Highway Vehicle



Colorado Off-Highway Vehicle Coalition

Economic Contribution of Off-Highway Vehicle Recreation in Colorado

July 2009

Motorized Recreation in IL

Snowmobiling generates **\$83.4**

million annually in total economic activity,

provides **754 jobs** and **\$10.6**

million in public revenue.

*Characteristics and Attitudes of Snowmobilers and Economic Impact of Snowmobile Recreation,
Illinois Institute for Rural Affairs, November 2010*



Criteria for Selection



Size -- 300 + acres

Location – Central, near services

CERP Review -- minimal impact

Soil Analysis – minimal impact

Elements of Site Review



Site

- Attendance
- Uses
- Residential analysis
- Hunting analysis



CERP

- E&T Species
- Cultural concerns



Soil Analysis

- Suitable
- Non- suitable to what degree

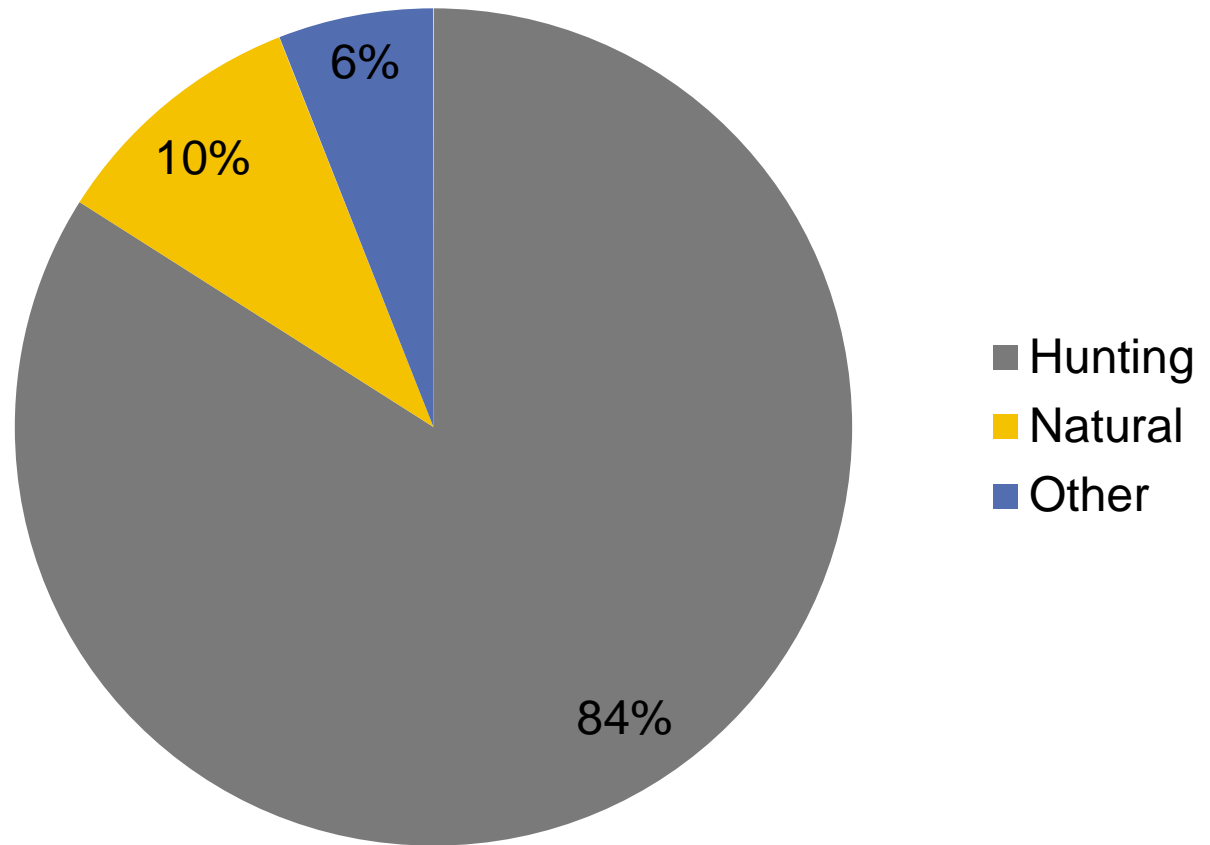
DNR Managed Lands

State Parks	126,270.495
Conservation Areas	73,395.608
Fish Facilities	232.650
Natural Areas	44,771.500
Fish and Wildlife Areas	93,835.503
State Wildlife Areas	2,666.683
Greenways and Trails	1,473.962
State Memorials	0.100
Boating Access Areas	6.300
State Recreation Areas	5,500.895
State Forests	21,251.937
Game Propagation Centers	1,087.420
Tree Nurseries	360.000
State Habitat Areas	8,090.037
Other Department Properties	693.265
Museum Division Properties	284.650

**DNR manages
473,698 acres**

DNR Managed Land Use

396,428 huntable acreage



Fun with Facts & Figures

- Hunting Licenses sold - (Hunting, Combo, Sr. Hunting, Sr. Combo)
 - 2009 – 293,127
 - 2010 – 284,744
 - 2011 – 285,511
 - 2012 – 277,266
 - 2013 - 284,765
- ATV/OHV registered vehicles (As of September, 2014)
 - 2014 – 292,311 (11,350 registered agricultural use)

St. Joe State Park

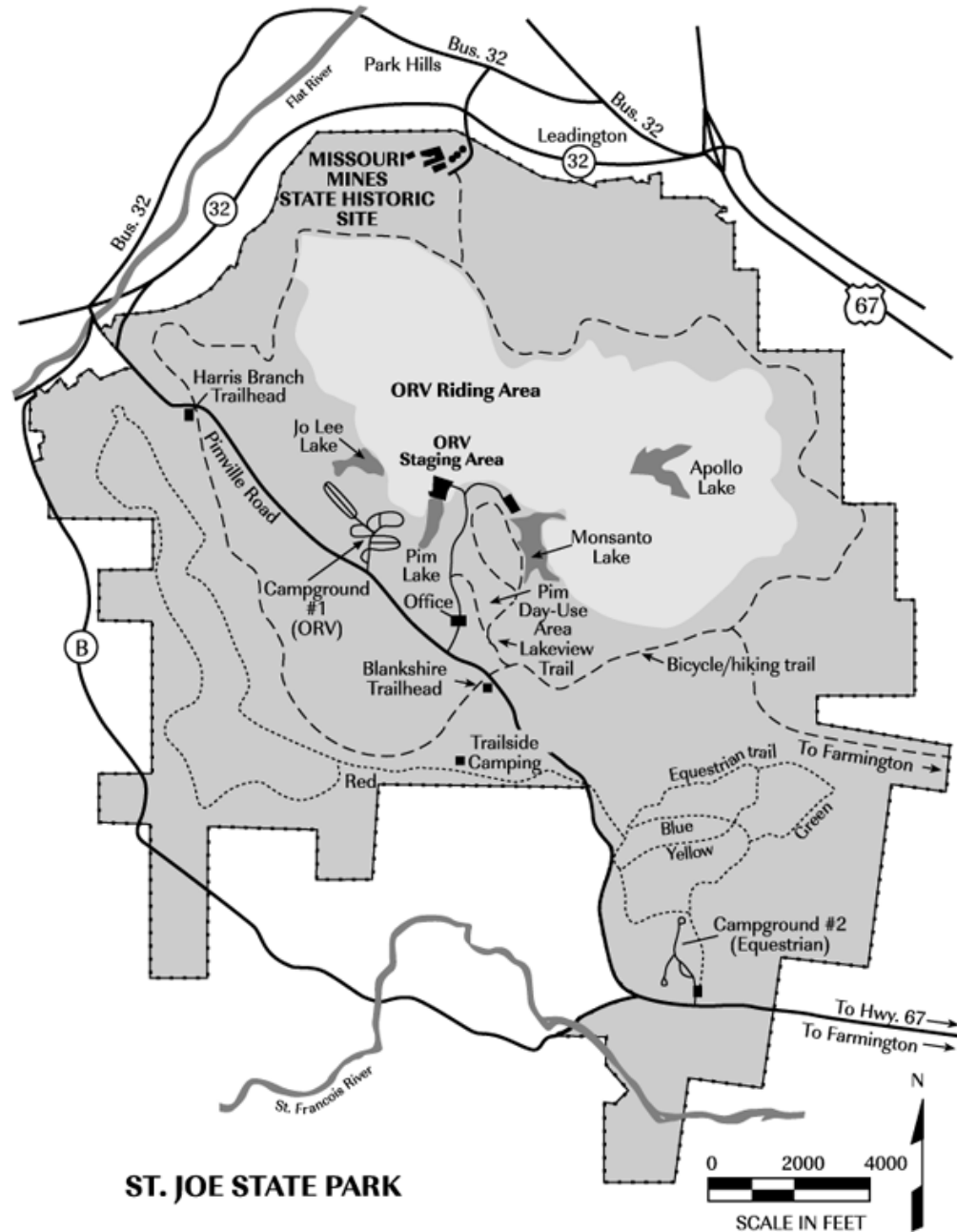
Attendance Figures

A	B	C	D	E	F	G	H	I
	5 Year ORV Attendance							
	2009	2010	2011	2012	2013	2014		
January	1680	1203	1006	1541	970	820		
February	2258	1144	2110	1453	962	569		
March	4534	3992	3134	3513	2293	2510		
April	5491	4884	4229	4394	3247	2765		
May	6435	5661	4406	3852	3321	3621		
June	5284	4356	4300	3815	4113	3383		
July	5887	4517	3927	2606	3238	3242		
August	5680	3917	3396	2563	2710	2819		
September	4527	4231	3803	3692	3049	1258	Month to date	
October	4272	5060	4302	2990	2738			
November	4614	3002	2793	2601	2034			
December	812	620	1781	1251	760			
Total Year #s	51474	42587	39187	34271	29435	20987		
UTV only #'s	516	1206	1490	1595	2021	1997 YTD		

Potential annual revenue influx– \$525,000

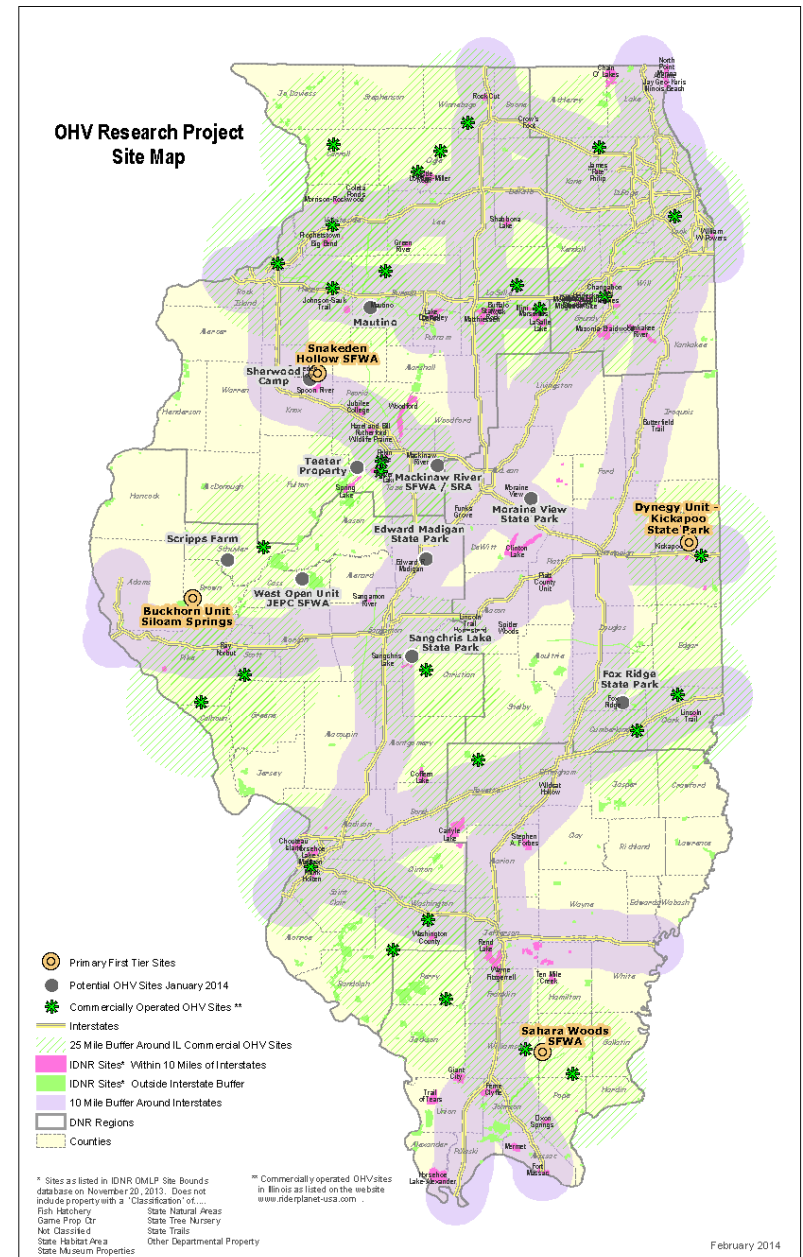
Using 30,000 visitors each paying \$15 daily fee

St. Joe State Park



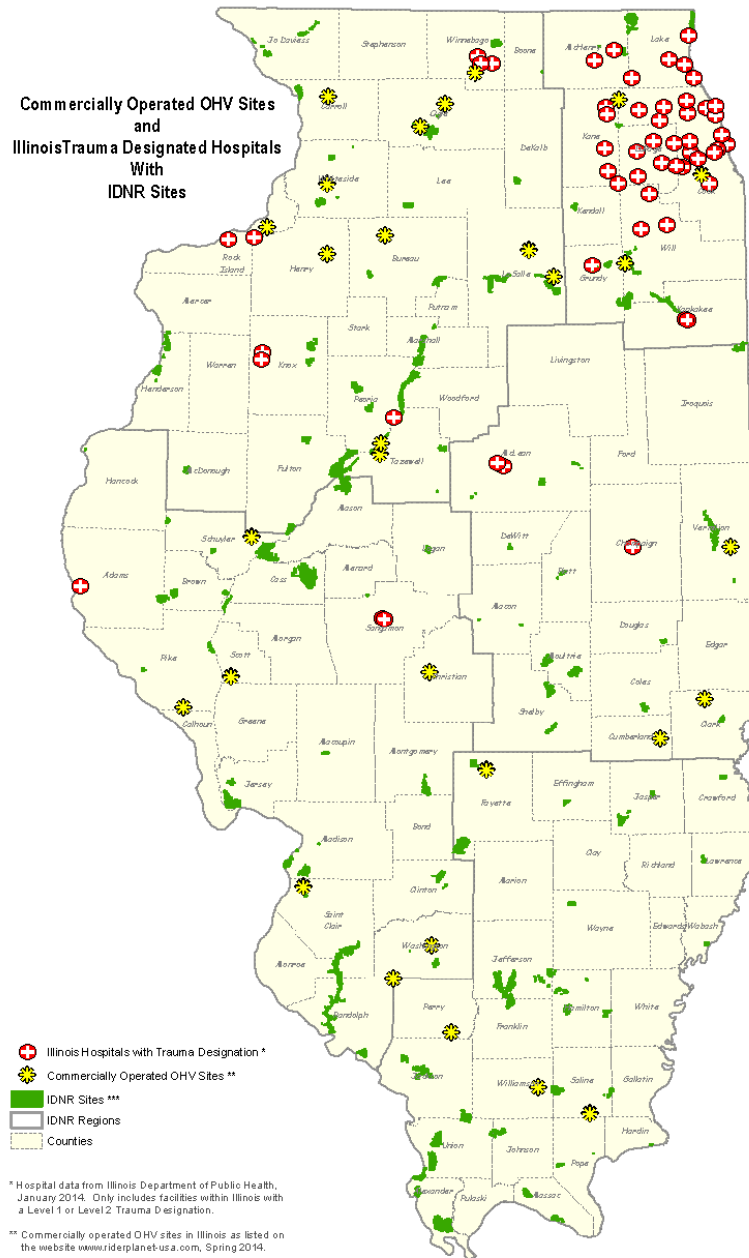
Potential Sites

- DNR Sites
 - Fox Ridge
 - Ed Madigan
 - Frank Mautino
 - Hurricane Creek
 - Jim Edgar Panther Creek-West Open Unit
 - Kickapoo – Dynegy acquisition
 - Mackinaw
 - Moraine View
 - Sahara Woods
 - Scripps Farm
 - Snakeden Hollow
 - Sangchris
 - Siloam Springs – Buckhorn Ranch satellite
- Non-DNR sites
 - Sherwood Police Camp
 - Teeter Property



Emergency Facilities

Commercially Operated OHV Sites
and
IllinoisTrauma Designated Hospitals
With
IDNR Sites



* Hospital data from Illinois Department of Public Health, January 2014. Only includes facilities within Illinois with a Level 1 or Level 2 Trauma Designation.

** Commercially operated OHV sites in Illinois as listed on the website www.riderplanet-usa.com, Spring 2014.

***IDNR sites from IDNR OMLP database August 2014. Sites included are - State Parks, State Fish and Wildlife Areas, State Conservation Areas and State Forests.



[REDACTED]

[REDACTED]

National Estimates of Victim, Driver, and Incident Characteristics for ATV-Related, Emergency Department-Treated Injuries in the United States from January 2010–August 2010 with an Analysis of Victim, Driver and Incident Characteristics for ATV-Related Fatalities from 2005 through 2007

[REDACTED]

[REDACTED]

May 2014

ATV-Related, Emergency Department-Treated Injuries (January 2010–August 2010)

The total estimated number of non-occupational, operational ATV-related, emergency department-treated injuries to drivers or passengers of ATVs between January 1, 2010 and August 31, 2010 is 71,800. Extrapolated annually, the estimated number of non-occupational, operational ATV-related, emergency department-treated injuries to drivers or passengers of ATVs for 2010 is 101,000.

ATV-Related Fatalities (2005–2007)

A total of 2,321 reported ATV-related fatalities from 2005 through 2007, where the victim was a driver or passenger of an operational ATV, were analyzed in this study. The reported fatalities do not represent a statistical sample. Thus, results and conclusions drawn from the analysis of ATV-related fatalities should only be considered for those reported, and by definition, cannot be generalized to all ATV-related fatalities.

Issues for consideration

A scoring system was developed to provide a better look at how some of the issues considered would affect future uses.

OHV Site Score

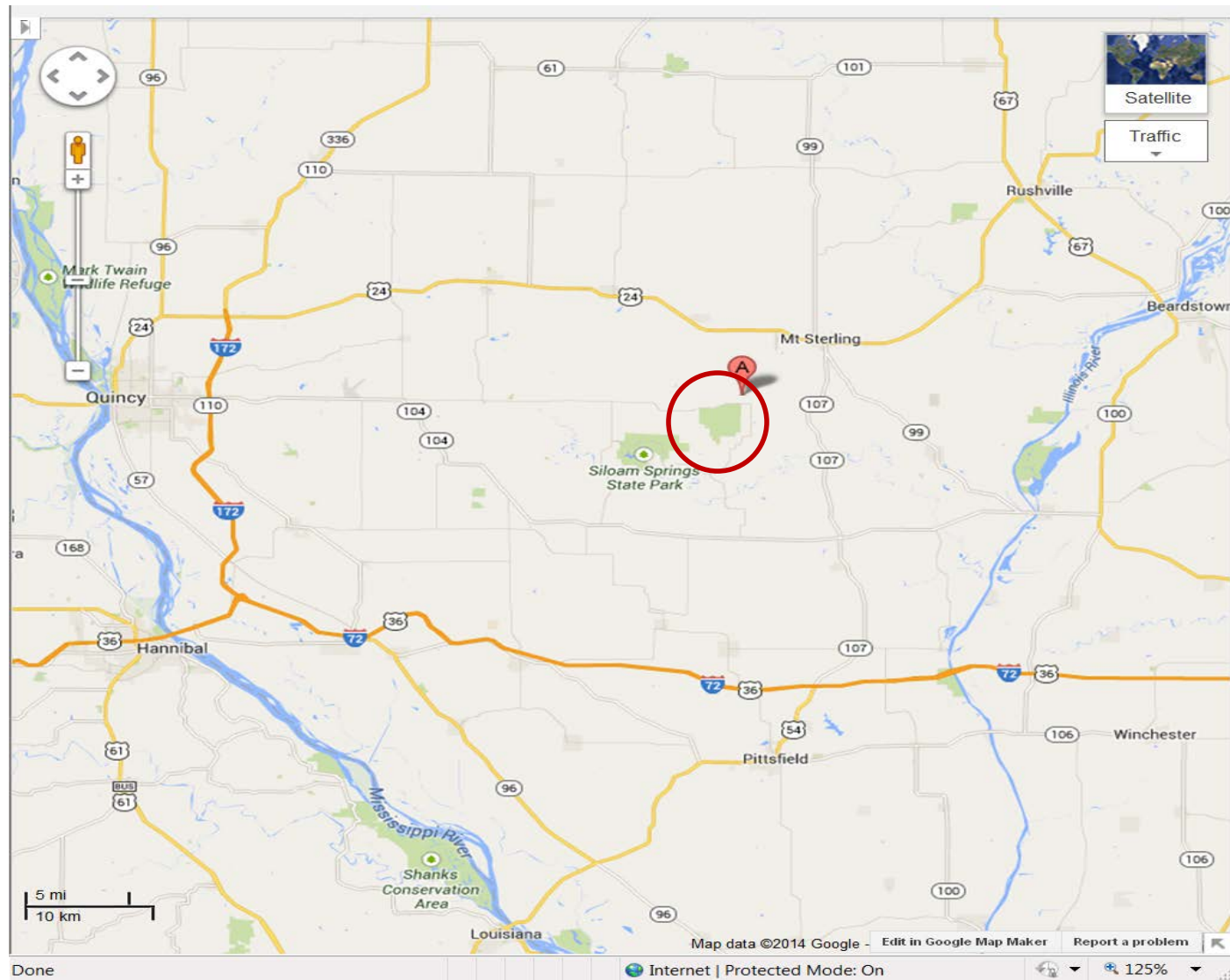
Acres	Attendance 0 #	Cultural 0 1 2 3	Protected 0 1 2	Soil/Surf Limitation	Existing Uses 0 1 2 3	Federal Int 0 1 2	OHV Int 0 1	Decision
-------	-------------------	---------------------	--------------------	-------------------------	--------------------------	----------------------	----------------	----------

0.4	Sherwood Camp	400	0	0	0	1	0	0	0	Not Suitable
2.7	Dynegy Unit - Kickapoo SP	678	0	1	0	0.059	0	0	1	Likely
3.7	Buckhorn Unit - SSSP	2263	424	0	0	0.434	1	0	0	Likely
4.2	Teeter Parperty	200	0	3	0	0.514	0	0	1	Not Suitable
4.8	West Open Unit - JEPC	519	0	2	2	0.641	1	0	0	Not Suitable
5.9	Scripps Farm - WKSP	736	155	3	0	0.417	1	0	1	Unlikely
7.1	Sahara Woods SFWA	4100	0	0	0	0	2	0	1	Likely
18.6	Mackinaw River SFWA/SRA	1448	10,149	0	2	1	2	2	1	Not Suitable
45.3	Mautino SFWA	910	38,361	0	0	1	3	2	1	Not Suitable
114.6	Snakeden Hollow SFWA	2500	108,086	0	1	0	3	1	0	Likely
232.1	Edward Madigan State Park	982	228,075	1	0	0.327	2	0	0	Unlikely
285.7	Moraine View State Park	1687	279,009	0	0	1	3	2	0	Not Suitable
309.7	Fox Ridge State Park	1683	299,652	3	1	0.333	3	1	1	Unlikely
647.6	Sangchris Lake State Park	3022	638,607	0	0	1	3	2	1	Not Suitable

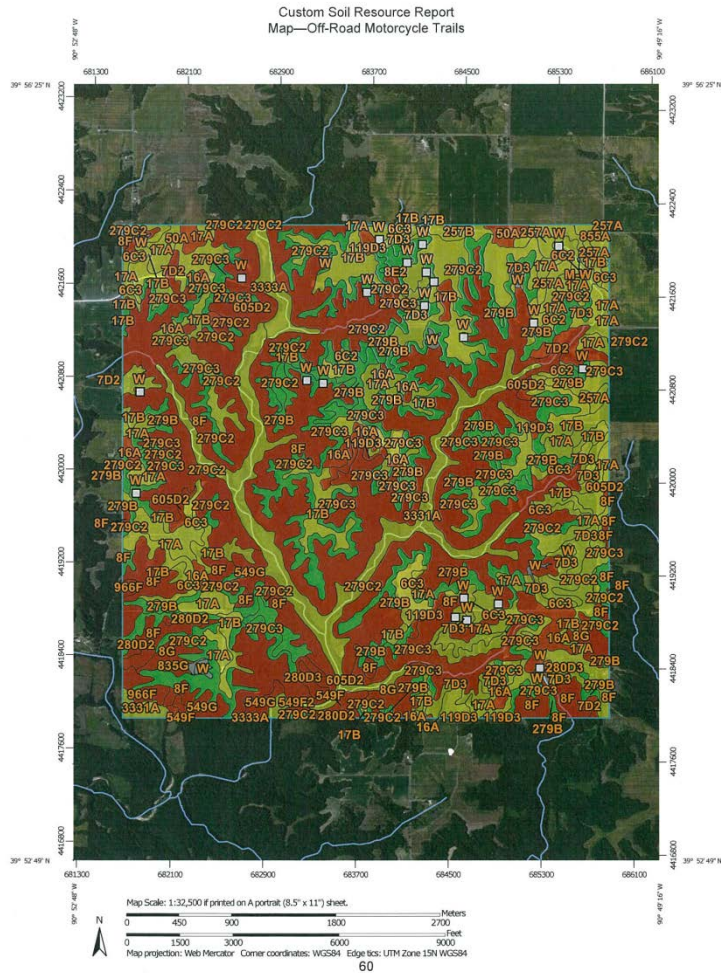
Notes:

Acres:	Total Acres of Area of Interest (AOI)
Attendance:	Total attendance figures from latest Land & Water Report 2013
Cultural:	Value assigned 0 for none, 1, 2 or 3 based on the number of database hits
Protected:	Value assigned 0 for none, 1 for either Nature Preserve (NP) or Illinois Natural Area Inventory (INAI) site, 2 for both NP or INAI
Soil/Surface Limitation:	This value represents the decimal value of the percent of AOI where the soils are very limited.
Existing Uses:	Value assigned 0 for none, 1 for 1 type of user recreation IE Passive recreation or hunting, 2 or 3 for additional multiple activities
Federal Interest:	Value assigned 0 for none, 1 for 1 type of federal aid assistance program used at a site IE. Dingell-Johnson/Pittman-Robertson 2 for multiple programs used.
OHV Interest:	Value assigned 0 for none within the 25 mile buffer established criteria, 1 if an commercially operated site within the buffer

Buckhorn Unit of Siloam Springs



Soil Analysis Comparison



Buckhorn Ranch



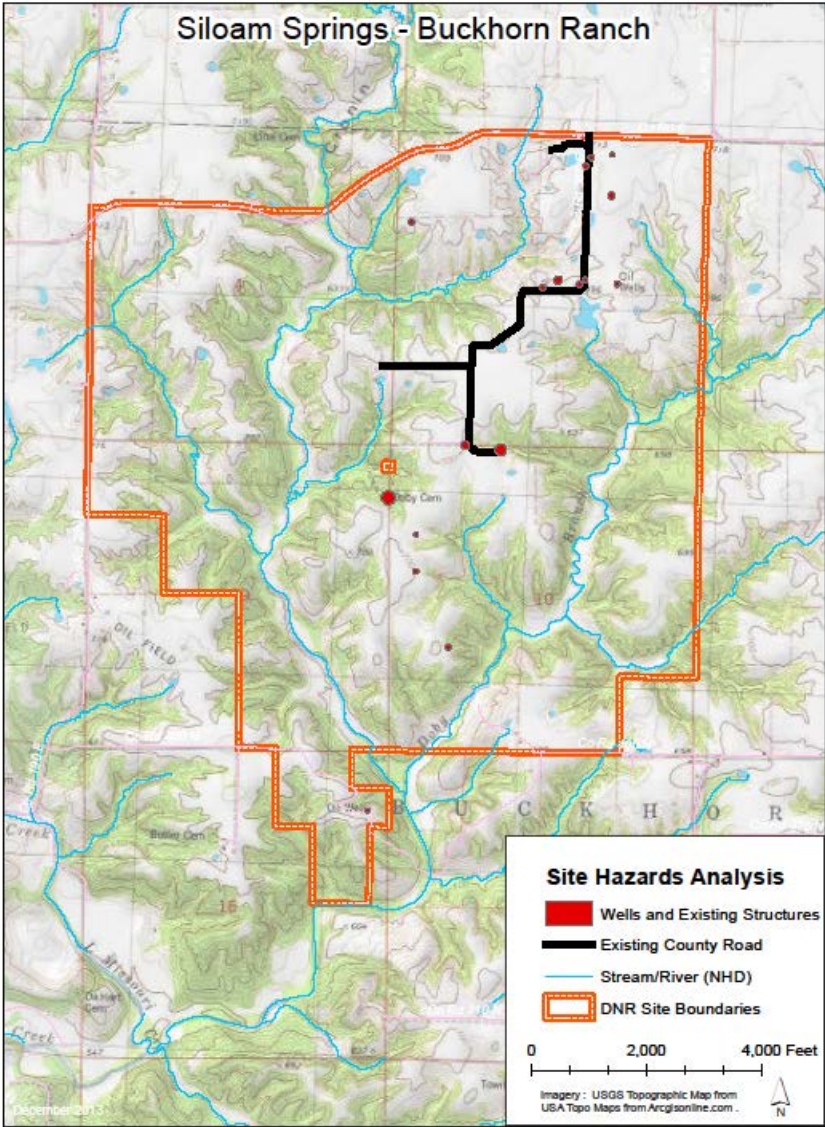
Sherwood Camp

Compatibility with Existing Uses at Buckhorn

- Decreased hunter trips and harvests since the site's opening.
- In the 2004 Site Management plan, staff noted that while the site was marketed as archery only, hunter trips decreased from 3000 in 2001 to 1910 in 2003 and has maintained the lower range in the years since.
- Mineral rights on the property. Source Dynamics maintain the mineral rights for all 2200 acres, there are currently 12 operating oil wells on the site.

Site Images







Siloam Springs - Buckhorn Ranch

NW 474.6 acres

NC 460.5 acres

East 498.9 acres

West – 384.5 acres

SC 475.9 acres

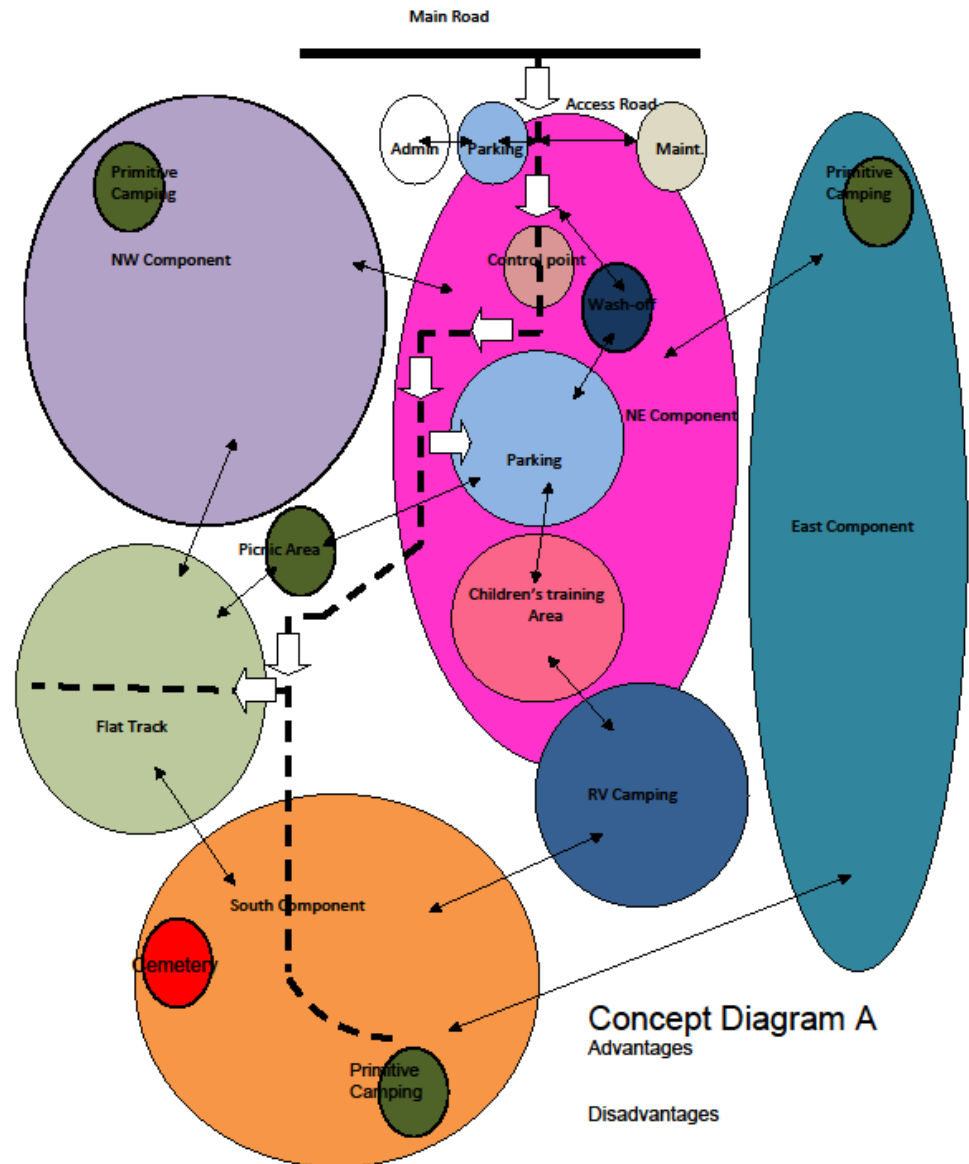
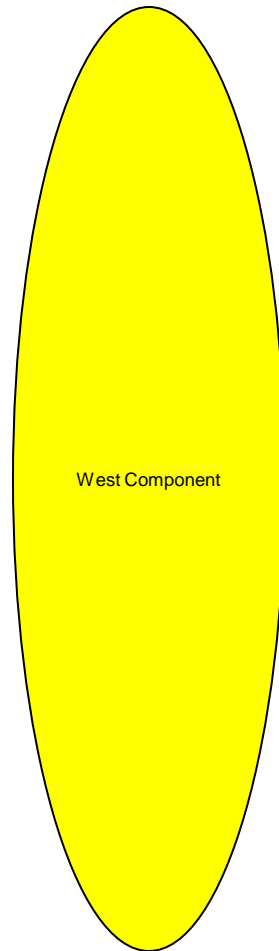
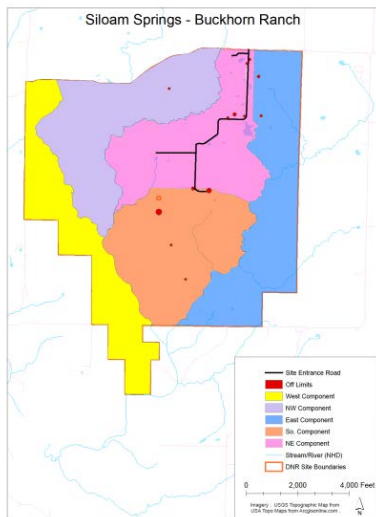
- Site Entrance Road
- Off Limits
- West Component
- NW Component
- East Component
- So. Component
- NE Component
- Stream/River (NHD)
- DNR Site Boundaries

0 2,000 4,000 Feet

Imagery: USGS Topographic Map from
USA Topo Maps from Arcgisonline.com



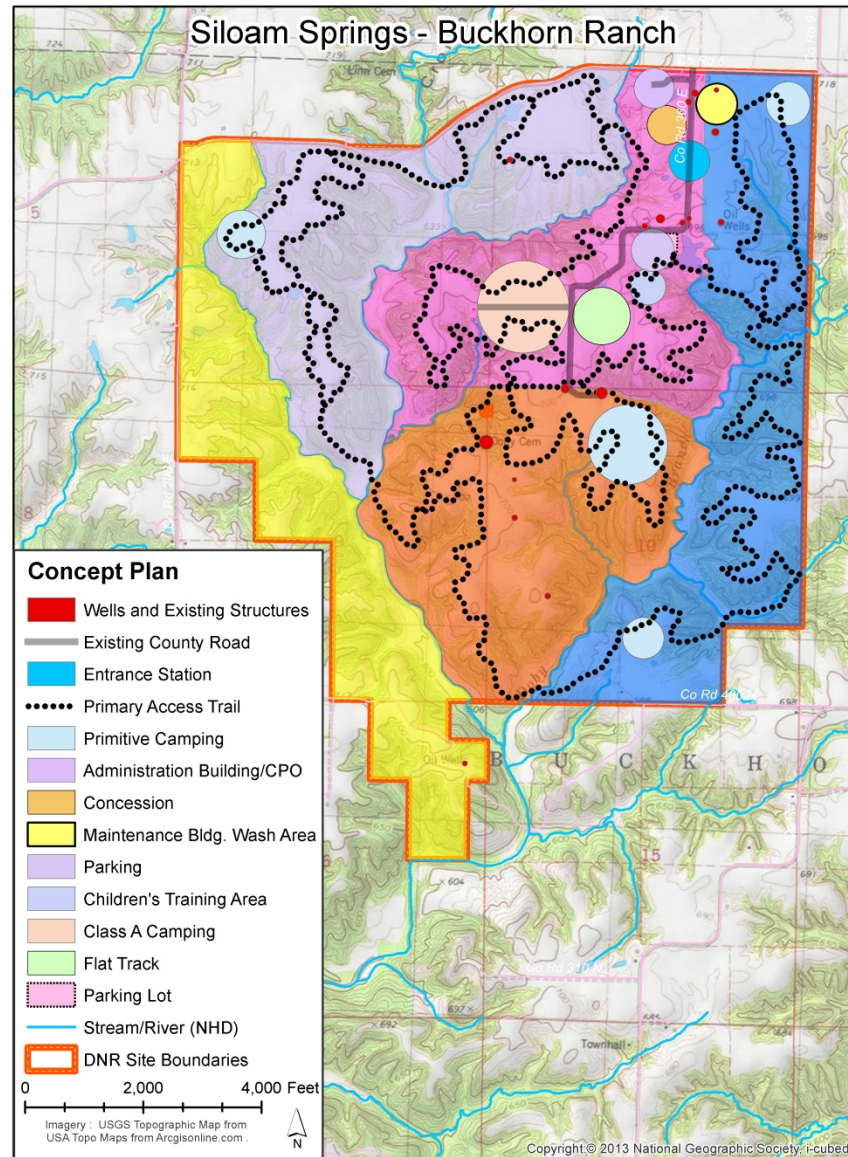
Buckhorn Concept A



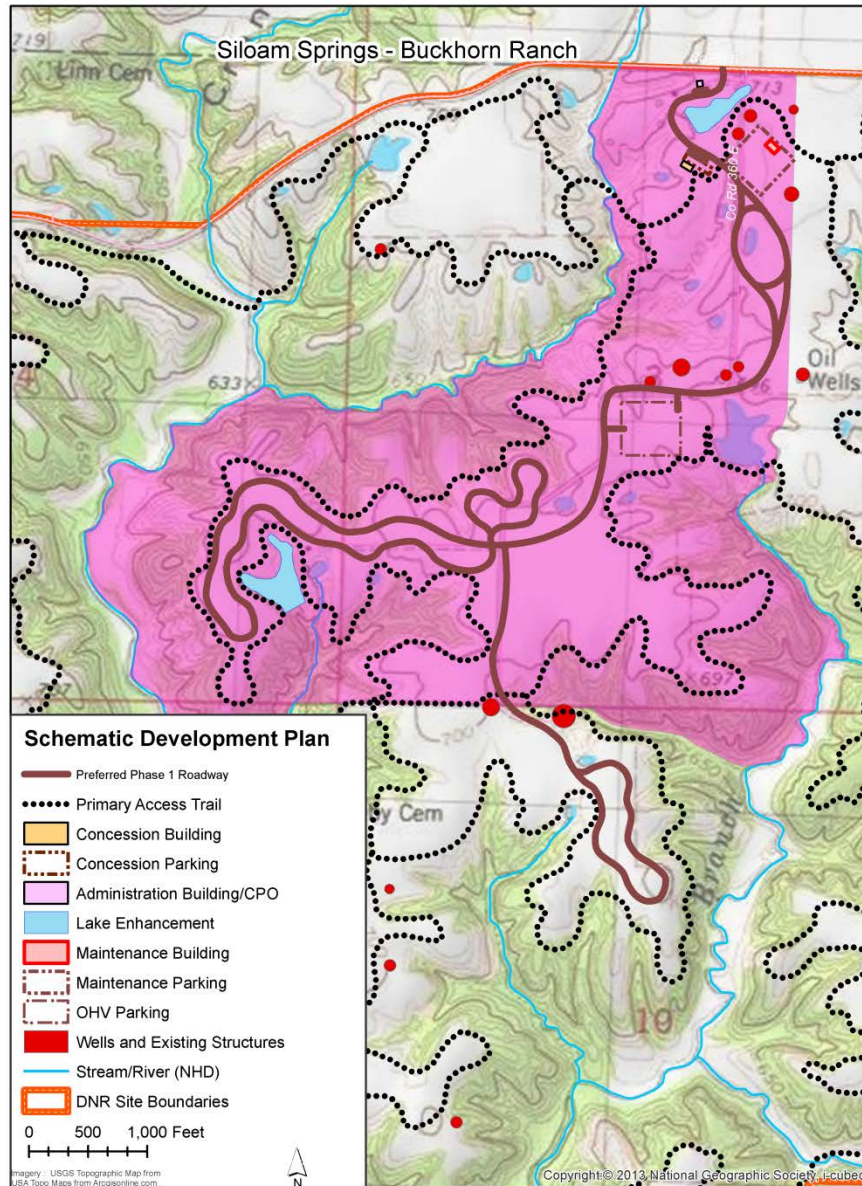
Buckhorn

Concept A

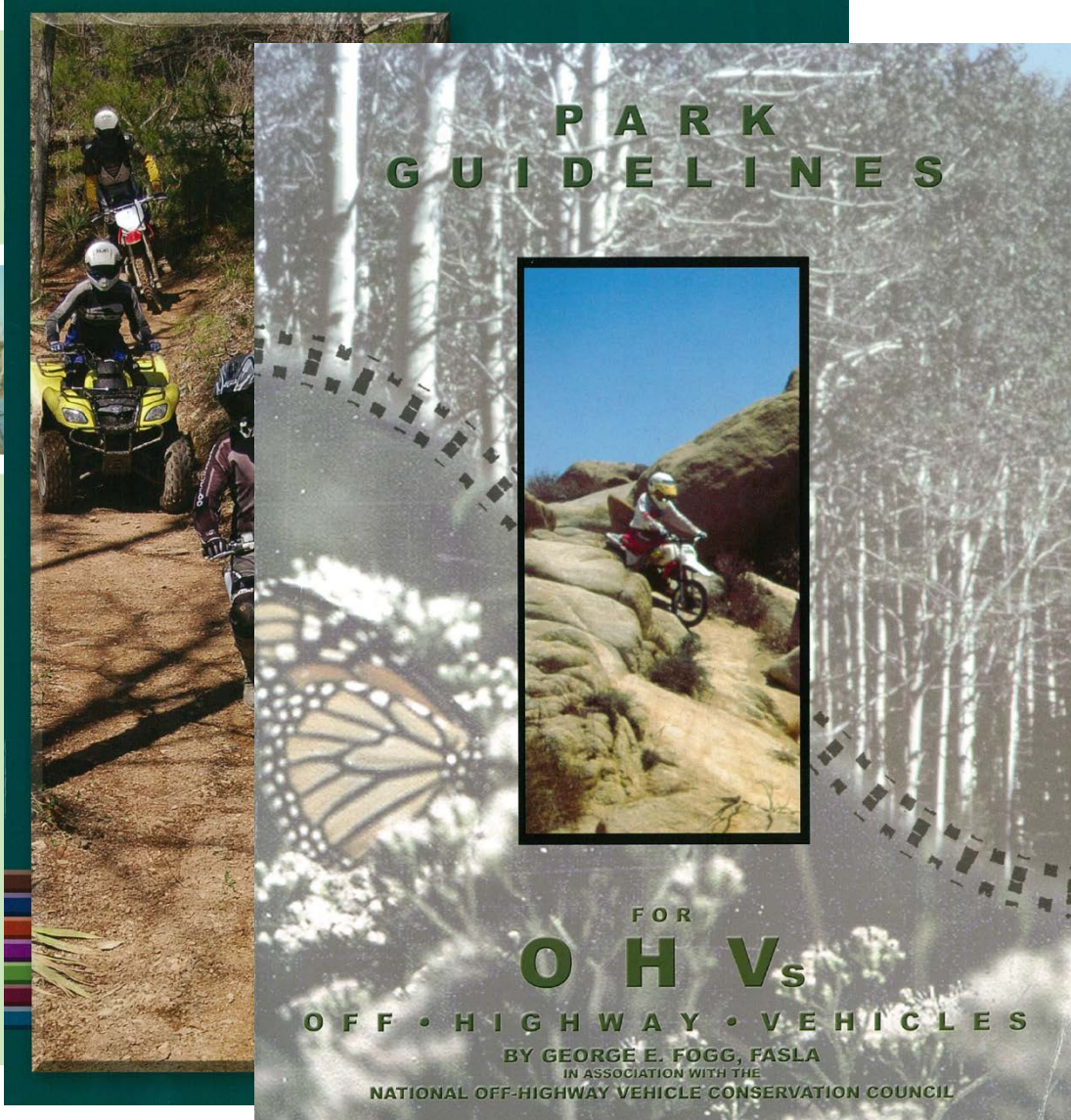
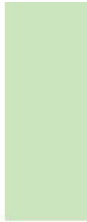
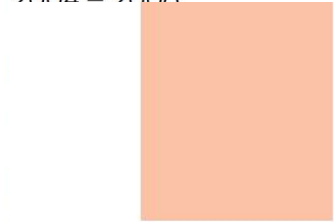
with topography



Buckhorn Schematic North Central Component



A Plan for Developing New Hampshire's
Statewide Trail System for ATVs and Trail Bikes
2004 - 2008



News : OHV Stamp Implementation Postponed - Microsoft Internet Explorer provided by State of Illinois
http://www.dnr.illinois.gov/news/Pages/OHVStampImplementationPostponed.aspx

McAfee
Favorites DNR (2) DNR Email State of Illinois Enterprise ... Suggested Sites Web Slice Gallery www.dnr.illinois.gov Welc... Yahoo! Mail

Home News : OHV Stamp I... News : OHV Sta...

Illinois DNR > News

FOR IMMEDIATE RELEASE:
March 6, 2014

CONTACTS:
Chris Young
217-557-1240

PRs - current
PRs - recent
PRs - 2011-on
PRs - 2010
News Stories

OHV Stamp Implementation Postponed

IDNR will seek public input on first OHV facility while rule changes are made

SPRINGFIELD – The Illinois Department of Natural Resources (IDNR), in cooperation with the Illinois Legislative Sportsmen’s Caucus, will postpone implementation of the Illinois Off-Highway Vehicle (OHV) Usage Stamp until further notice. The postponement will allow time for the Illinois General Assembly to consider changes to the law that would exempt certain users.

“This is a good faith move on our part to make sure all the rules are in place before OHV riders are required to purchase a stamp,” said IDNR Director Marc Miller. “We also will use this time to seek additional public input as we begin to develop an off-highway riding program in Illinois.”

The IDNR supports previously announced changes to the original OHV Usage Stamp law, including reducing the OHV stamp fee for youth off-highway vehicles (75cc and under) and adding several exemptions. Additional exemptions to the OHV stamp would include standard golf carts, OHVs operated on land owned by the operator or the operator’s immediate family, OHVs operated by persons with certain disabilities, OHVs operated for any commercial business purpose, OHVs operated at a commercial riding park, and OHVs registered with the Illinois Secretary of State. Legislation to enact those changes (Senate Bill 2633), sponsored by State Sen. David Koehler and State Rep. Frank Mautino, is pending in the Illinois General Assembly.

The postponement will allow additional time for OHV users, and others interested in motorized outdoor recreation, to provide input on planning for development by the IDNR of public OHV riding facilities in Illinois.

The OHV Usage Stamp, approved as part of the IDNR Sustainable Funding initiative in 2012, was scheduled to become effective April 1, 2014. When implemented, funds generated through the OHV Usage Stamp will be used to develop public-access trails for OHV use in Illinois, and to utilize more than \$1 million in federal funds currently available for motorized trail development and maintenance through available matching state funding.

When implemented, the annual OHV Usage Stamp will be \$15.00, plus a \$0.50 issuance fee to the point-of-sale vendor.

Done Trusted sites | Protected Mode: Off 125% 2:32 P

Survey

- DNR staff and OHV advisory board members or designees will work together have developed a survey for users to learn more about user needs and habits.

IDNR OHV PARK INTEREST SURVEY

The Illinois Department of Natural Resources would like your assistance in compiling information on public interest in a potential Off-Highway Vehicle Park in western Illinois.

The purpose of the survey is to gather information for the IDNR and off-highway vehicle (OHV) recreation enthusiasts for the planning, design, funding, operation, and maintenance of sustainable OHV parks that meet the needs and desires of the OHV public while addressing environmental and general social concerns.

An OHV park is a developed and managed recreational and educational facility that provides for a variety of OHV riding and driving experiences.

Age: ____ Male: ____ Female: ____

How often per year do you participate in OHV recreation:

None ____ 1-2 times ____ 3-4 times ____
5-6 times ____ 7-12 times ____ 13+ times ____

How many ATV/OHV/UTVs do you own?

1 ____ 2 ____ 3 or more ____

How far do you generally drive to reach your riding/driving area?

0-.5 hr. ____ .5-1 hr. ____ 1-2 hrs. ____ 2-4 hrs. ____ Over 4 hrs. ____

Generally, how many people, including yourself, do you travel with when you go out to ride/drive?

1-2 ____ 3-4 ____ 5-7 ____ 8-9 ____ 10-12 ____

Number of males ____

Number of Females ____

Generally, what do you travel in when you go out to ride/drive?

Pick-up truck ____ Pick-up truck /trailer ____ RV/trailer ____ Car w/trailer ____

Generally, what else do you do/participate in when you go out to ride/drive?

Camp ____

Hike ____

Mountain bike ____

Fish ____

Hunt ____

Horseback ride ____

Nature-related activities – bird watching, etc. ____

Boat ____

Golf ____

Rocketeering/Model Airplane ____

Other (List) _____

Collaboration and Compromise

- DNR staff has already reached out to the following:
 - NOVCC – National Off-highway Vehicle Conservation Council
 - IN DNR – reviewing the Interlake SRA
 - IA – Webster County/DNR
 - US Forest Service – Land Between the Lakes
 - Trails Unlimited – service provided by the US Forest Service
- DNR staff will coordinate:
 - Public input meetings
 - Special presentations upon request
 - Public advisory group for the site
 - Will actively coordinate with area communities, elected officials and residents
 - Police and emergency services personnel

FAQs

- What will be done about noise?
- **ANSWER:** The OHV park must meet zoning regulations and environmental regulations. Park design and management will address potential impacts to neighbors and the community, provide an attractive park setting for its visitors.
- Appropriate sound barriers and/or buffer will be provided where needed. Dust will be minimized by modifying surfaces and/or wetting down riding surfaces.
- **What will be done about accidents?**
- **ANSWER:** DNR and DNR law enforcement will work closely with local law enforcement and emergency response professionals to develop a law enforcement and emergency response plan.
- **What impact will the site have on wildlife?**
- **ANSWER:** Many other existing sites indicate a minimal impact on wildlife on site. There will be management strategies developed to mitigate impact.
- **What kind of economic impact would this have to our county?**
- **ANSWER:** Neighboring states with sites have varying but substantial economic impact.